



DELO
SCELT I PER TE

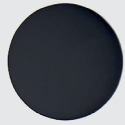
Serie DADO

Rubineria bagno

RUBINETTERIA BAGNO

Serie DADO

POSSIBILI FINITURE



Nero opaco



Bianco opaco



Simil acciaio

LAVABO



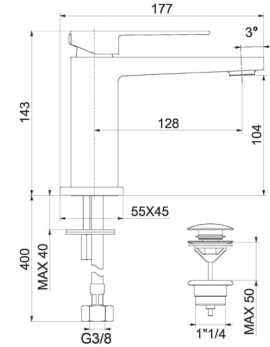
Scarico automatico 1"1/4 spessore regolabile, con meccanismo clicker.

RICAMBI (PAG. 60-73)

3101102 - Maniglia cromo

3101097 - Cartuccia D. 25

codice	finitura	UM	min. ord.	conf.	cat.
● 3001010	cromo	NR	1	10	11
● 3001910	nero opaco	NR	1	1	11
3001710	bianco opaco	NR	1	1	11
3001810	simil acciaio	NR	1	1	11



LAVABO "BIG SIZE"



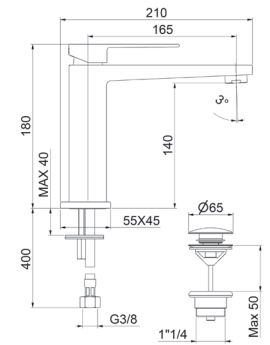
Scarico automatico 1"1/4 spessore regolabile, con meccanismo clicker.

RICAMBI (PAG. 60-73)

3101102 - Maniglia cromo

3101097 - Cartuccia D. 25

codice	finitura	UM	min. ord.	conf.	cat.
● 3001027	cromo	NR	1	1	11
● 3001927	nero opaco	NR	1	1	11
3001727	bianco opaco	NR	1	1	11
3001827	simil acciaio	NR	1	1	11



LAVABO ALTO



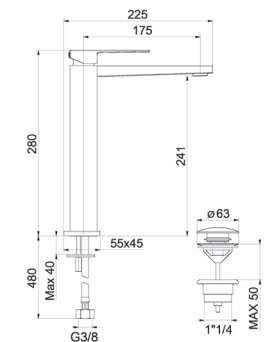
Scarico automatico 1"1/4 spessore regolabile, con meccanismo clicker.

RICAMBI (PAG. 60-73)

3101102 - Maniglia cromo

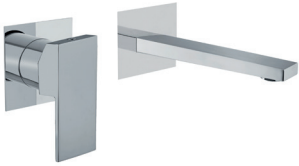
3101097 - Cartuccia D. 25

codice	finitura	UM	min. ord.	conf.	cat.
● 3001011	cromo	NR	1	5	11
● 3001911	nero opaco	NR	1	1	11
3001711	bianco opaco	NR	1	1	11
3001811	simil acciaio	NR	1	1	11

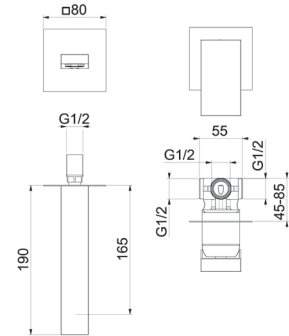


LAVABO A PARETE 2 PEZZI

Bocca di erogazione lunghezza totale 190 mm., senza scarico.



codice	finitura	UM	min. ord.	conf.	cat.
● 3001013	cromo	NR	1	5	11
● 3001913	nero opaco	NR	1	1	11
3001713	bianco opaco	NR	1	1	11
3001813	simil acciaio	NR	1	1	11

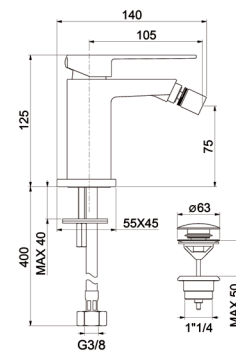


BIDET

Scarico automatico 1"1/4 spessore regolabile, con meccanismo clicker.

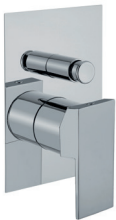


codice	finitura	UM	min. ord.	conf.	cat.
● 3001012	cromo	NR	1	10	11
● 3001912	nero opaco	NR	1	1	11
3001712	bianco opaco	NR	1	1	11
3001812	simil acciaio	NR	1	1	11

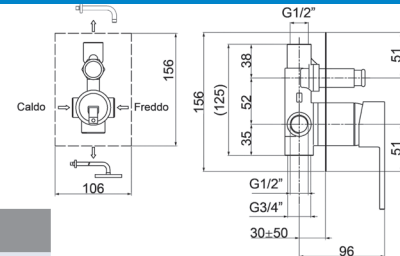


DOCCIA INCASSO CON DEVIATORE

Deviatore a pulsante. Incluso corpo incasso.



codice	finitura	UM	min. ord.	conf.	cat.
● 3001015	cromo	NR	1	10	11
● 3001915	nero opaco	NR	1	1	11
3001715	bianco opaco	NR	1	1	11
3001815	simil acciaio	NR	1	1	11

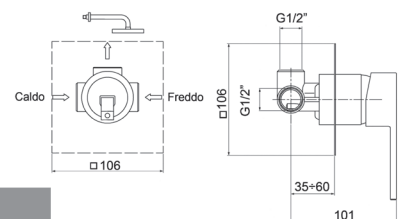


DOCCIA INCASSO

Incluso corpo incasso.



codice	finitura	UM	min. ord.	conf.	cat.
● 3001014	cromo	NR	1	10	11
● 3001914	nero opaco	NR	1	1	11
3001714	bianco opaco	NR	1	1	11
3001814	simil acciaio	NR	1	1	11

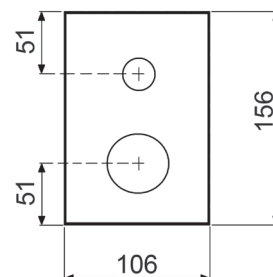


RUBINETTERIA BAGNO

Serie DADO

DOCCIA INCASSO CON DEVIATORE SOLO PARTI ESTERNE

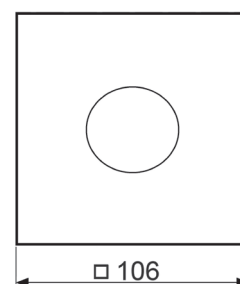
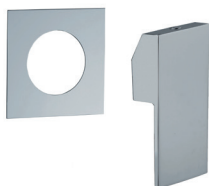
Solo parti esterne cromate, da completare con il corpo incasso a due vie (3005102). Deviatore a pulsante.



codice	finitura	UM	min. ord.	conf.	cat.
● 3001020	cromo	NR	1	10	11

DOCCIA INCASSO SOLO PARTI ESTERNE

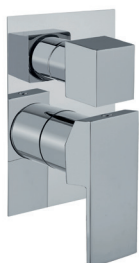
Solo parti esterne cromate, da completare con il corpo incasso a una via (3005101).



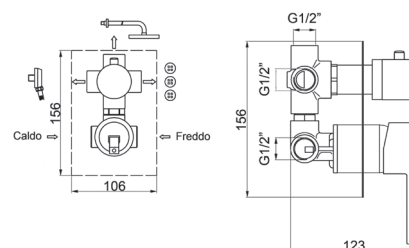
codice	finitura	UM	min. ord.	conf.	cat.
● 3001019	cromo	NR	1	10	11

DOCCIA INCASSO CON DEVIATORE 3 VIE

Deviatore a manopola. Compreso corpo incasso.

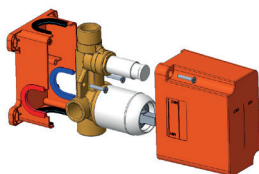


codice	finitura	UM	min. ord.	conf.	cat.
● 3001016	cromo	NR	1	10	11
● 3001916	nero opaco	NR	1	1	11
3001716	bianco opaco	NR	1	1	11
3001816	simil acciaio	NR	1	1	11

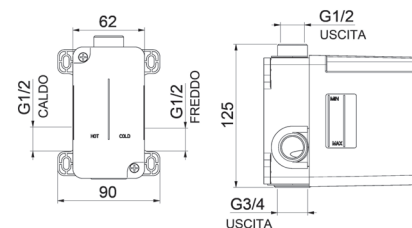


CORPO INCASSO 2 VIE

Con protezione.

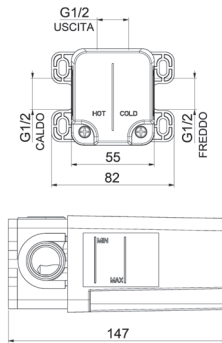
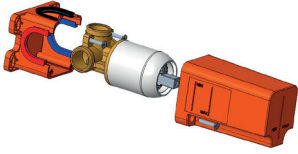


codice	finitura	UM	min. ord.	conf.	cat.
● 3005102	cromo	NR	1	1	11



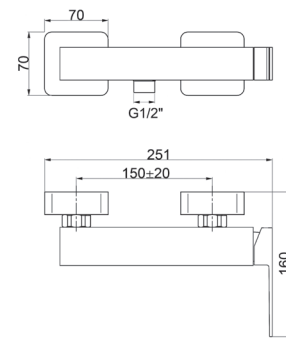
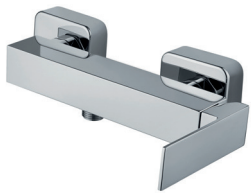
CORPO INCASSO 1 VIA

Con protezione.



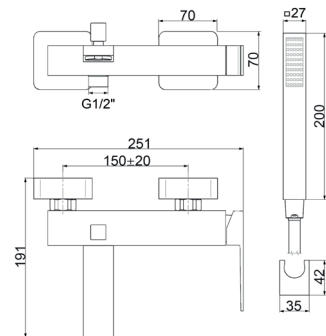
codice	finitura	UM	min. ord.	conf.	cat.
● 3005101	cromo	NR	1	1	11

DOCCIA ESTERNO



codice	finitura	UM	min. ord.	conf.	cat.
● 3001018	cromo	NR	1	5	11
3001918	nero opaco	NR	1	1	11
3001718	bianco opaco	NR	1	1	11
3001818	simil acciaio	NR	1	1	11

VASCA CON KIT DOCCIA

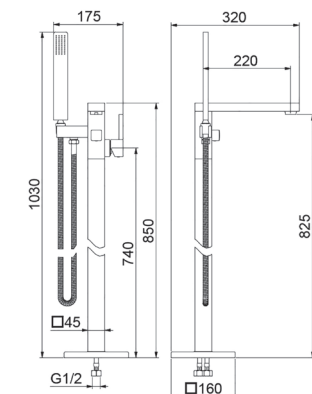


codice	finitura	UM	min. ord.	conf.	cat.
● 3001017	cromo	NR	1	5	11
3001917	nero opaco	NR	1	1	11
3001717	bianco opaco	NR	1	1	11
3001817	simil acciaio	NR	1	1	11

VASCA A PAVIMENTO



NOVITÀ!



codice	finitura	UM	min. ord.	conf.	cat.
● 3001026	cromo	NR	1	1	11
3001926	nero opaco	NR	1	1	11
3001726	bianco opaco	NR	1	1	11
3001826	simil acciaio	NR	1	1	11